

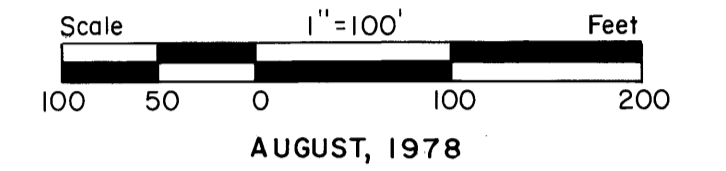
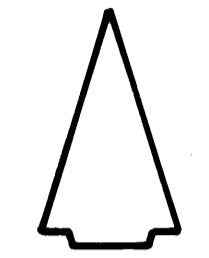
I, LOUISE V. ISAACS, CLERK OF THE CIRCUIT COURT OF MARTIN COUNTY, FLORIDA, HEREBY CERTIFY THAT THIS PLAT WAS FILED FOR RECORD IN PLAT BOOK 7, PAGE 60, MARTIN COUNTY FLORIDA, PUBLIC RECORDS, THIS DAY OF _____, 1978.

LOUISE V. ISAACS, CLERK
CIRCUIT COURT
MARTIN COUNTY, FLORIDA

FILE NO. _____

BY: _____ DEPUTY CLERK

NORTH

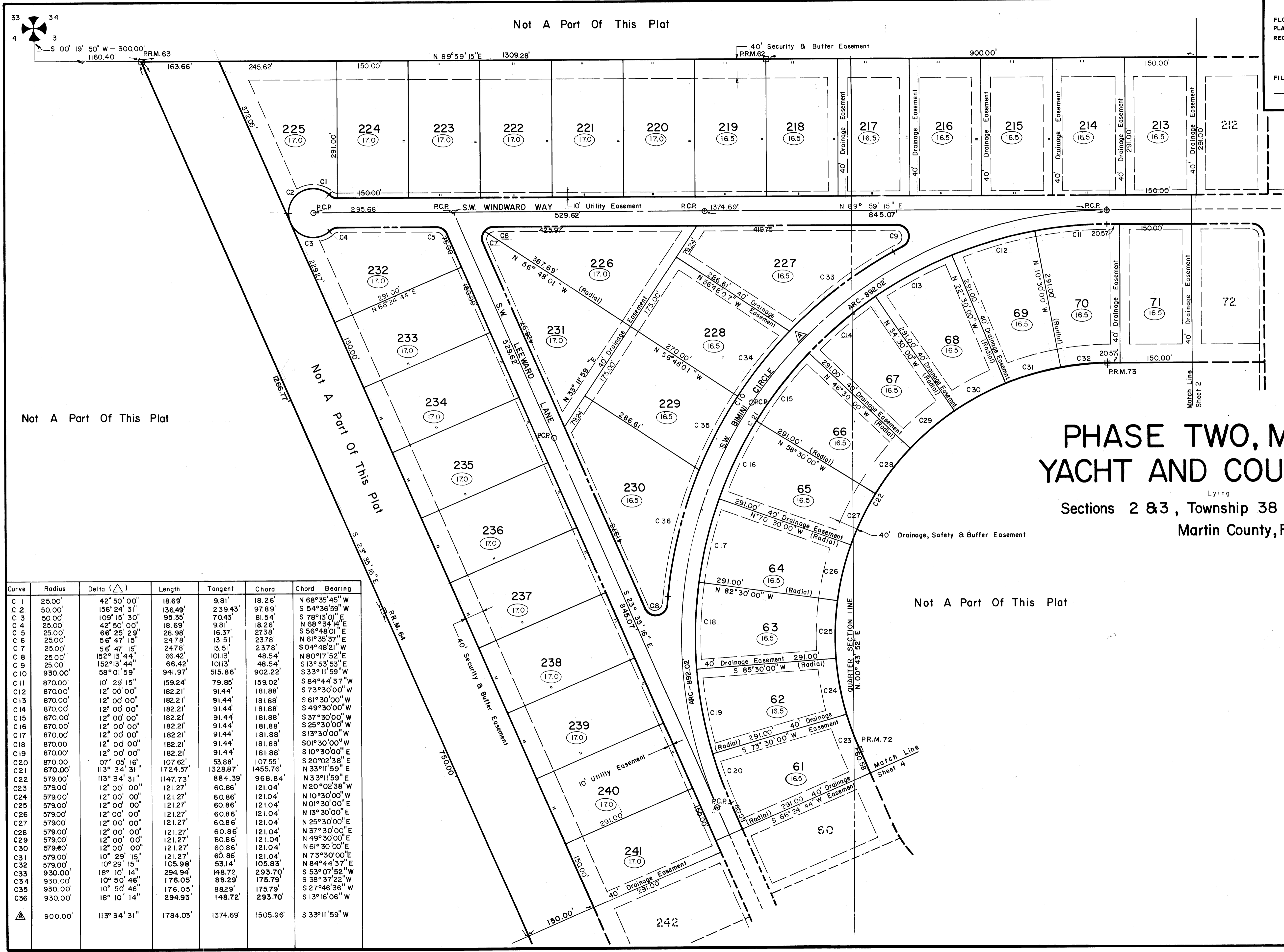


AUGUST, 1978

- LEGEND:
- DENOTES PERMANENT REFERENCE MONUMENT
 - DENOTES PERMANENT CONTROL POINT
 - (Number) DENOTES MINIMUM GROUND ELEV. FOR SEPTIC TANK INSTALLATION

PHASE TWO, MID-RIVERS YACHT AND COUNTRY CLUB

Lying In
Sections 2 & 3, Township 38 South, Range 40 East
Martin County, Florida



Curve	Radius	Delta (Δ)	Length	Tangent	Chord	Chord Bearing
C 1	25.00'	42° 50' 00"	18.69'	9.81'	18.26'	N 68° 35' 45" W
C 2	50.00'	156° 24' 31"	136.49'	239.43'	97.89'	S 54° 36' 59" W
C 3	50.00'	109° 15' 30"	95.35'	70.43'	81.54'	N 78° 13' 01" E
C 4	25.00'	42° 50' 00"	18.69'	9.81'	18.26'	N 68° 35' 45" E
C 5	25.00'	66° 25' 29"	28.98'	16.37'	27.38'	S 58° 48' 01" E
C 6	25.00'	56° 47' 15"	24.78'	13.51'	23.78'	N 61° 35' 37" E
C 7	25.00'	56° 47' 15"	24.78'	13.51'	23.78'	S 04° 48' 21" W
C 8	25.00'	152° 13' 44"	66.42'	101.13'	48.54'	N 80° 17' 52" E
C 9	25.00'	152° 13' 44"	66.42'	101.13'	48.54'	S 13° 53' 53" E
C 10	930.00'	58° 01' 59"	941.97'	515.86'	902.22'	S 33° 11' 59" W
C 11	870.00'	10° 29' 15"	159.24'	79.85'	159.02'	S 84° 44' 37" W
C 12	870.00'	12° 00' 00"	182.21'	91.44'	181.88'	S 73° 30' 00" W
C 13	870.00'	12° 00' 00"	182.21'	91.44'	181.88'	S 61° 30' 00" W
C 14	870.00'	12° 00' 00"	182.21'	91.44'	181.88'	S 49° 30' 00" W
C 15	870.00'	12° 00' 00"	182.21'	91.44'	181.88'	S 37° 30' 00" W
C 16	870.00'	12° 00' 00"	182.21'	91.44'	181.88'	S 25° 30' 00" W
C 17	870.00'	12° 00' 00"	182.21'	91.44'	181.88'	S 13° 30' 00" W
C 18	870.00'	12° 00' 00"	182.21'	91.44'	181.88'	S 01° 30' 00" W
C 19	870.00'	12° 00' 00"	182.21'	91.44'	181.88'	S 10° 30' 00" E
C 20	870.00'	07° 05' 16"	107.62'	53.88'	107.55'	S 20° 02' 38" E
C 21	870.00'	113° 34' 31"	1724.57'	1328.87'	1455.76'	N 33° 11' 59" E
C 22	579.00'	113° 34' 31"	1147.73'	968.84'	884.39'	N 33° 11' 59" E
C 23	579.00'	12° 00' 00"	121.27'	60.86'	121.04'	N 20° 02' 38" W
C 24	579.00'	12° 00' 00"	121.27'	60.86'	121.04'	N 10° 30' 00" W
C 25	579.00'	12° 00' 00"	121.27'	60.86'	121.04'	N 01° 30' 00" E
C 26	579.00'	12° 00' 00"	121.27'	60.86'	121.04'	N 13° 30' 00" E
C 27	579.00'	12° 00' 00"	121.27'	60.86'	121.04'	N 25° 30' 00" E
C 28	579.00'	12° 00' 00"	121.27'	60.86'	121.04'	N 37° 30' 00" E
C 29	579.00'	12° 00' 00"	121.27'	60.86'	121.04'	N 49° 30' 00" E
C 30	579.00'	12° 00' 00"	121.27'	60.86'	121.04'	N 61° 30' 00" E
C 31	579.00'	10° 29' 15"	121.27'	60.86'	121.04'	N 73° 30' 00" E
C 32	579.00'	10° 29' 15"	121.27'	60.86'	121.04'	N 84° 44' 37" E
C 33	930.00'	18° 10' 14"	294.94'	148.72'	293.70'	S 53° 07' 52" W
C 34	930.00'	10° 50' 46"	176.05'	88.29'	175.79'	S 38° 37' 22" W
C 35	930.00'	10° 50' 46"	176.05'	88.29'	175.79'	S 27° 46' 36" W
C 36	930.00'	18° 10' 14"	294.93'	148.72'	293.70'	S 13° 16' 06" W
△	900.00'	113° 34' 31"	1784.03'	1374.69'	1505.96'	S 33° 11' 59" W